

# LAFT

## Mobile measuring set for testing thermal imagers



Fig. 1. Photo of the LAFT measuring set

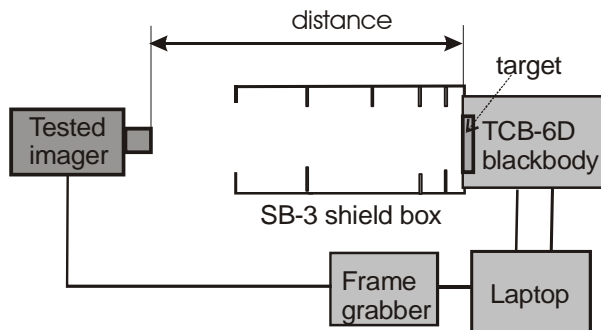


Fig.2. Block diagram of the LAFT measuring set

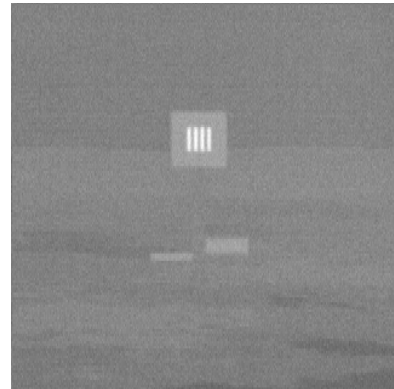


Fig.2. Image of the LAFT set generated by the tested imager during MRTD measurements

### BASIC INFORMATION:

The LAFT measuring set is a mobile variable distance measuring system that project images of the target directly to the tested thermal camera. The tested imager generates a distorted copies of the projected images. Quality of the images generated by the imager is evaluated and its important characteristics are measured.

The LAFT test set does not use collimator for image projection and the distance target-imager must be longer than the minimal focusing distance of the tested imager. Different patterns can be projected into the

direction of the tested imager. All important parameters of thermal imagers can be measured.

The LAFT test system are recommended for testing thermal imagers at field conditions or at laboratory/depot conditions when a long corridor as a test place can be used. Accuracy of measurements with LAFT test systems is at the same level as accuracy of measurements with laboratory class DT Series test systems assuming proper measurement conditions.

• **INFRAMET**

[www.inframet.com](http://www.inframet.com)

# LAFT

---

## Mobile measuring set for testing thermal imagers

### FEATURES:

- Versatile measuring tool that can be used in both field and laboratory applications
- Small size test set suitable for field/depot applications
- No limitations on optical aperture of tested thermal imagers
- Can be packed in a large suitcase and easily transported to any location
- Possible to test thermal imagers from some distance (no necessity to remove imager from a helicopter to test it)
- Possible to test thermal imagers when they being moved ( example: flight of a helicopter)
- A few thermal imagers can be tested at the same time (LAFT can projects imagers to a few thermal imagers at the same time)
- Minimal distance between the LAFT measuring set and the tested imager must be higher than the minimal focusing distance of the tested imager
- Enable measurement of the following parameters:
  - Basic version: MRTD, MDTD
  - Optional version (with SAT-T module): MRTD, MDTD, MTF, NETD, FPN, non-uniformity, SiTF, distortion, FOV.
  - More parameters can be optionally measured (please contact Inframet)

### SPECIFICATIONS

Parameter	Value
Modules	TCB-6D blackbody/controller, multi-pattern target, SB-3 shield box, transport box/tripod, SAT-T module (laptop, frame grabber, TCB Control program, TAS-T program)
Target emitting aperture	300×300 mm
Blackbody active aperture	150×150 mm
Differential temperature range	-20°C to +55°C (in comparison to ambient temperature)
Absolute temperature range	5°C to +70°C (at 25 °C ambient temperature)
Set point and resolution	0.001°C
Response time	10°C step - 90 sec
Uniformity	< 0.06°C
Blackbody emissivity	0.97±0.01
Temporal stability	±0.003°C for ΔT<10°C
Target emissivity	0.97±0.01
Mass	14 kg
Dimensions	300x300x600 mm (blackbody, target, shield) 300× 270×190 mm (controller)
Operating temperature range	5°C to 40°C
Storage temperature range	5°C to 55°C
Humidity	Up to 90% (non-condensing)
Power	230 V (option 12V)
Accessories	DC 12V/AC 220V converter

\*specifications are subject to change without prior notice

---

### CONTACT:

Tel: +48 604061817

Fax: +48 22 3987244

Email: [info@inframet.com](mailto:info@inframet.com)

● **INFRAMET**

[www.inframet.com](http://www.inframet.com)