

# LOF

## Mobile measuring set for testing surveillance TV cameras



Fig. 1. Photo of the LOF measuring set

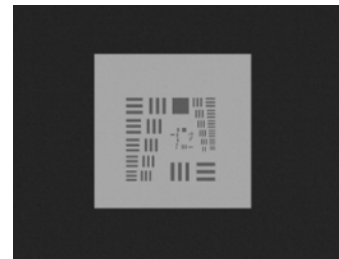
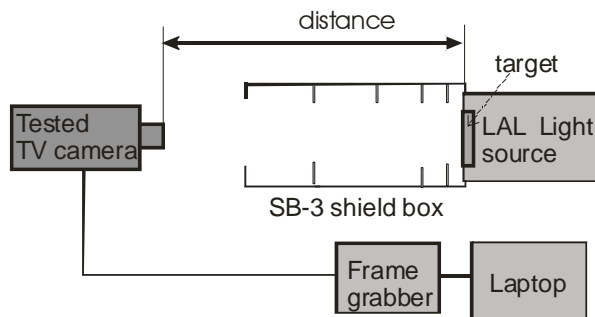


Fig.2. Image of USAF 1951 targets generated by tested TV camera during MRC measurements

Fig.2. Block diagram of the LOF measuring set  
**BASIC INFORMATION:**

The LOF measuring set is a mobile variable distance measuring system that project images of a set of standard targets directly to the tested TV camera. The tested camera generates a distorted copies of the projected images. Quality of the images generated by the imager is evaluated and its important characteristics are measured.

The LOF test set does not use collimator for image projection and the distance target-TV camera must be longer than the minimal focusing distance of the tested imager. Different patterns can be projected into the

direction of the tested imager. All important parameters of surveillance TV cameras can be measured.

The LOF test system are recommended for testing surveillance TV cameras field conditions or at laboratory/depot conditions when a long corridor as a test place can be used. Accuracy of measurements with LOF test systems is at the same level as accuracy of measurements with laboratory class TVT Series test systems assuming proper measurement conditions.

• **INFRAMET**

[www.inframet.com](http://www.inframet.com)

# LOF

---

## Mobile measuring set for testing surveillance TV cameras

### FEATURES:

- Versatile measuring tool that can be used in both field and laboratory applications
- Enable testing both level TV cameras and LLLTV cameras for night applications
- Small size test set suitable for field/depot applications
- No limitations on optical aperture of tested TV cameras
- Can be packed in a large suitcase and easily transported to any location
- Possible to test TV cameras from some distance (no necessity to remove imager from a helicopter to test it)
- A few TV cameras can be tested at the same time (LOF can projects imagers to a few TV cameras at the same time)
- Minimal distance between the LOF measuring set and the tested imager must be higher than the minimal focusing distance of the tested imager
- Enable measurement of the following parameters:
  - Basic version: resolution, MRC
  - Optional version: : resolution, MRC, MTF, sensitivity, SNR, distortion, FOV

### SPECIFICATIONS

Parameter	Value
Modules	LAL light source, set of targets, SB-3 shield box, transport box/tripod, laptop, frame grabber, TAS-V program
Light emitting aperture	Diameter 200 mm
Number of work modes	3 (halogen, white LED, monochromatic LED)
Mode one	halogen bulb as a light source for the spectral range 0.4-1µm.
Color temperature of halogen bulb	2856±50 K in 400-1000nm
Regulation type	Continuous
Regulation method	Opto-mechanical attenuator
Luminance range	0.2 mcd/m <sup>2</sup> - 2 kcd/m <sup>2</sup>
Regulation resolution	0.1 mcd/m <sup>2</sup> (at low intensity range)
Mode two:	white LED
Regulation method	Electronic regulation
Luminance range	1 mcd/m <sup>2</sup> - 2 kcd/m <sup>2</sup>
Regulation resolution	0.1 mcd/m <sup>2</sup> (at low intensity range)
Mode three:	monochromatic LED 595 nm.
Regulation method	Electronic regulation
Luminance range	Non-calibrated (relative digital units)
Dynamic	>1 000 000 :1
Long term stability	<2%
Short term stability	<0.3%
Mass	14 kg
Dimensions	300x300x600 mm
Operating temperature range	5°C to 40°C
Storage temperature range	5°C to 55°C
Humidity	Up to 90% (non-condensing)
Power	230 V (option 12V)
Accessories	DC 12V/AC 220V converter

\*specifications are subject to change without prior notice

---

### CONTACT:

• **INFRAMET**

[www.inframet.com](http://www.inframet.com)

# LOF

---

Mobile measuring set for testing surveillance TV cameras

Tel: +48 604061817

Fax: +48 22 3987244

Email: [info@inframet.com](mailto:info@inframet.com)

• *INFRAMET*

---

[www.inframet.com](http://www.inframet.com)